



Alligator Production Suitability Index Model for Restoration Planning and Assessment

Dilip Shinde¹, Leonard Pearlstine¹, Laura A. Brandt², Frank J. Mazzotti³, Mark W. Parry¹, Brian Jeffery³, and Alicia LoGalbo¹

¹South Florida Natural Resources Center, National Park Service, Everglades National Park

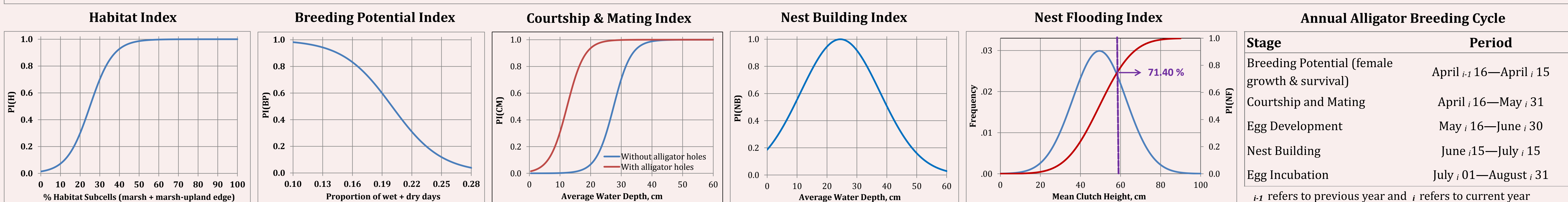
²U.S. Fish and Wildlife Service

³Fort Lauderdale Research and Education Center, University of Florida



The Alligator Production Suitability Index Model (APSI) incorporates concepts from existing alligator habitat suitability models, the literature, and data that have been collected in the last decade. The model estimates an alligator production suitability index that includes components for habitat assessment and quality, breeding, courtship and mating, and nesting success (nest building and nest flooding). The major input requirement for the model includes daily continuous surfaces of water depth over the modeling time period, habitat, locations and height of tree islands, locations of alligator holes, and, optionally, salinity for coastal regions. Users will typically only need to provide water depths and salinity (if used). Examination of individual components of the index during a year provides insight to any limiting hydrologic conditions that contribute to a poor overall index, thus inhibiting successful hatchling production. The APSI model can help in optimizing water management to stabilize and improve alligator populations and has been used to evaluate the effects of alternative Everglades restoration scenarios on habitat suitability for alligator production in the Central Everglades Planning Project (CEPP).

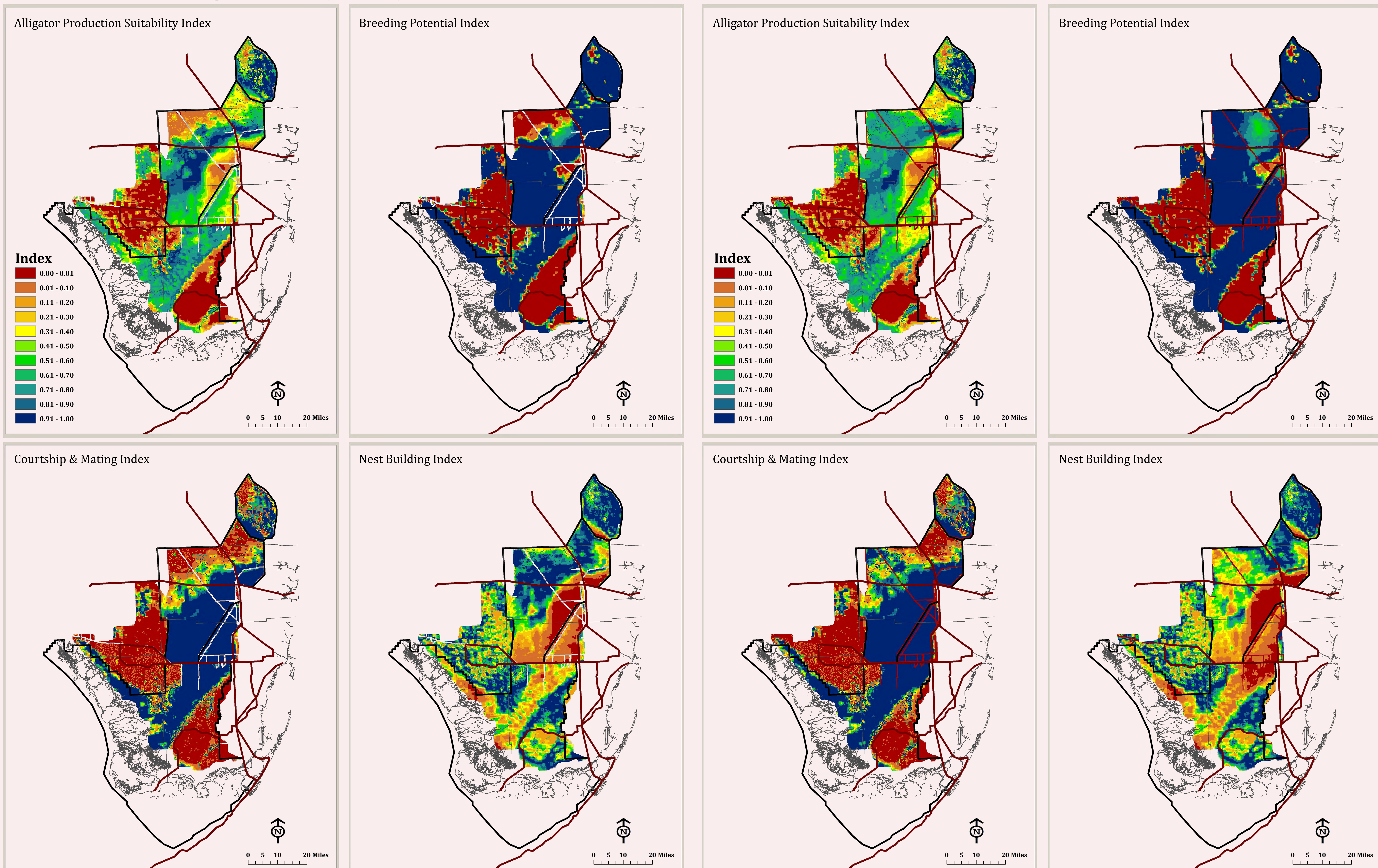
$$APSI = \{PI(H) * PI(BP) * PI(CM) * PI(NB) * [1-PI(NF)]\}^{1/5}$$



RSM existing conditions (2012EC)

Simulation Results: Year 1983

RSM CEPP tentatively selected plan (Alt4R2)



REFERENCES: Shinde, D., L. Pearlstine, L.A. Brandt, F.J. Mazzotti, M.W. Parry, B. Jeffery, and A. LoGalbo. 2014. Alligator Production Suitability Index Model (GATOR-PSIM v. 2.0): Ecological and Design Documentation. South Florida Natural Resources Center, Everglades National Park, Homestead, Florida. Ecological Model Report. SFNRC Technical Series 2014:1. 18pp.

Model documentation and code is available at: <http://www.cloudacus.com/simglades/alligator.php>

ACKNOWLEDGEMENTS: We sincerely thank all contributors that supported the development of this model, including those who developed previous alligator habitat suitability models and field researchers for their tireless efforts collecting and analyzing data. Portions of this work were supported by funding from the U.S. Geological Survey Greater Everglades Priority Ecosystems Science Program. Much of the improved understanding of alligator ecology was made possible by studies funded as part of the Restoration Coordination and Verification (RECOVER) Monitoring and Assessment Plan (MAP). Thanks are also due to Janice H. Parsons for preparing all the maps.